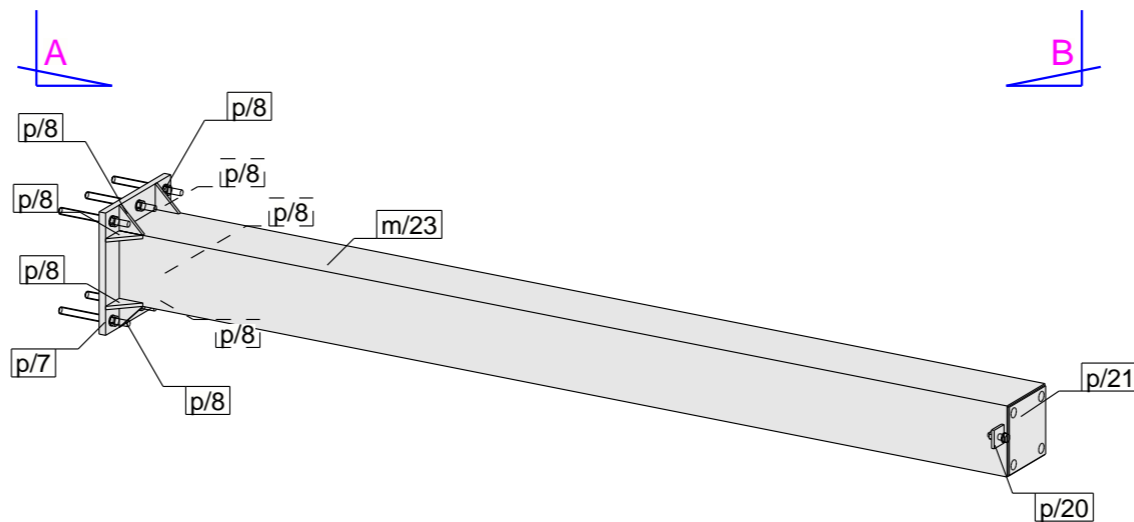
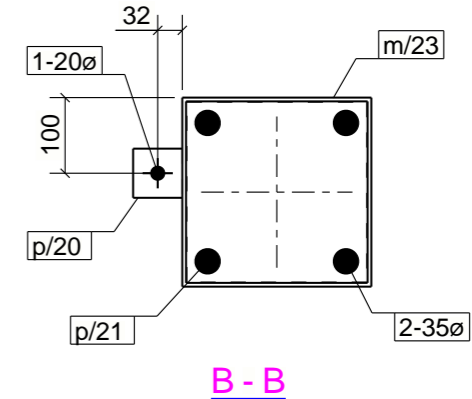
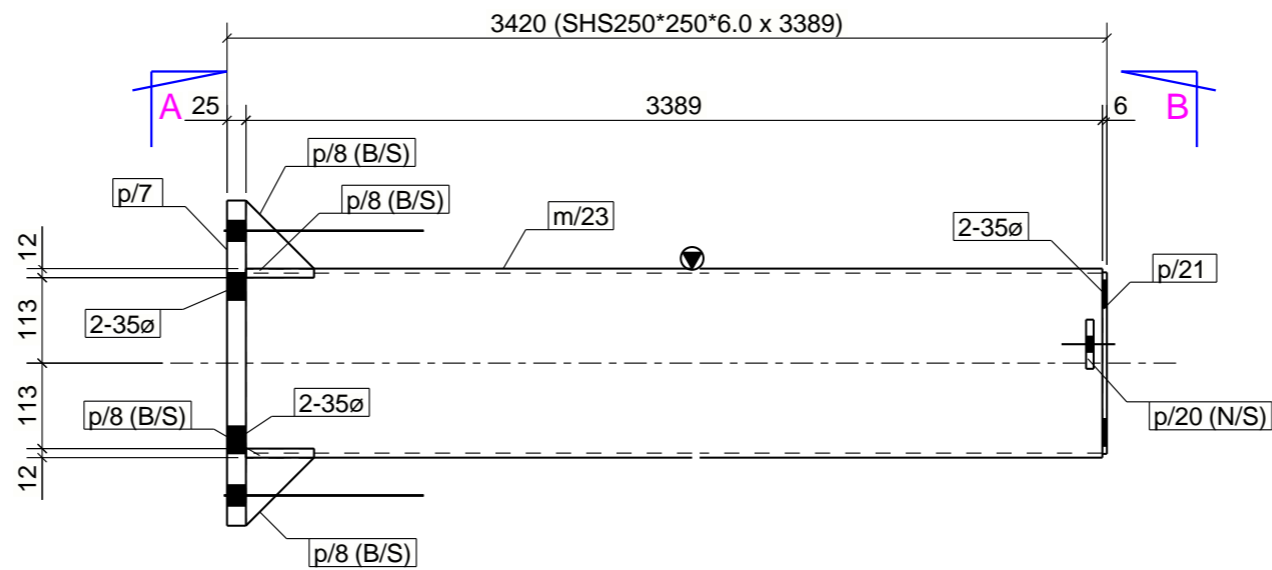
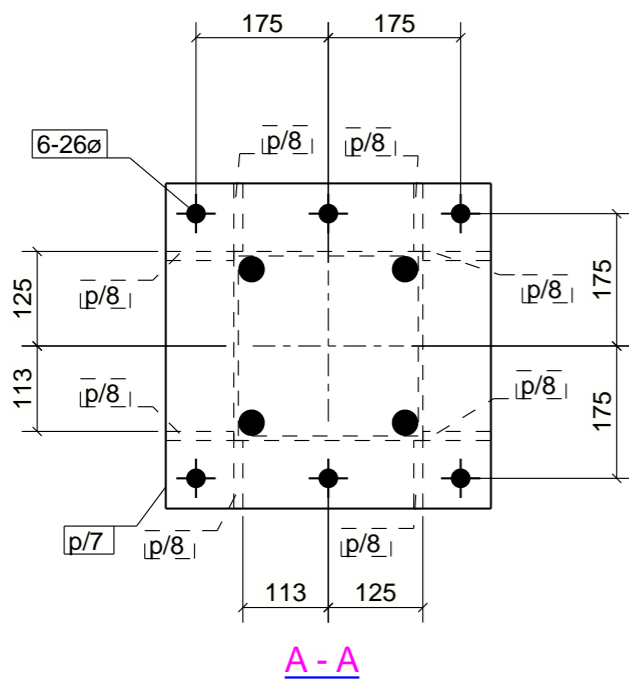
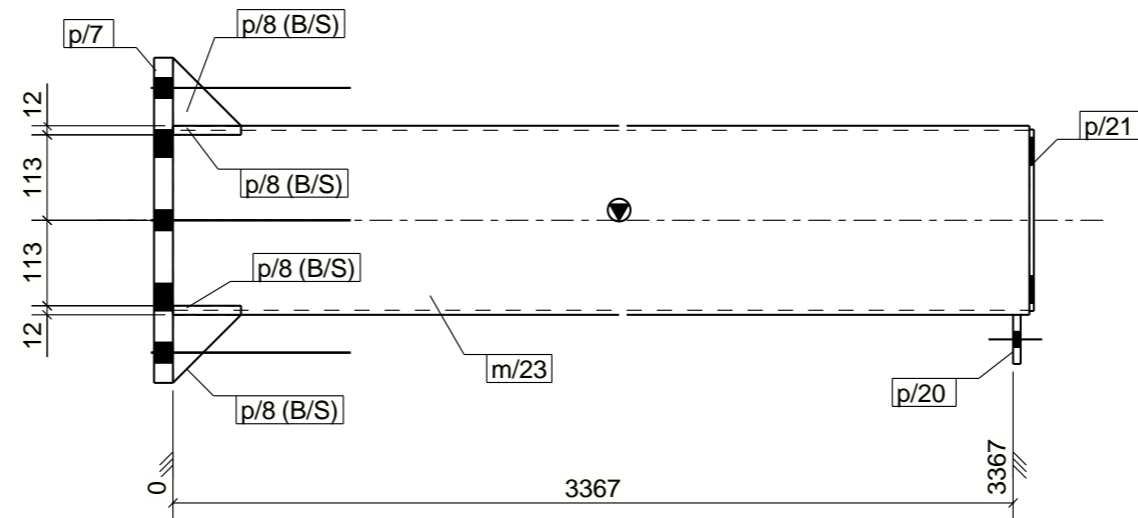


PHASE	QTY.
1	1
GRID LOCATION	
P1/2	

ALL WELDS TO BE 6CFW U.N.O (AS/NZ 1554)
 REMOVE ALL BURRS BEFORE PAINTING/GALVANISING
 MARK BEAM SIDE ON CONNECTIONS PLATES MARKED <
 STAMP/MARK BEAMS ACCORDINGLY



MATERIAL LIST

ITEM	No.OFF	SECTION	LENGTH	GRADE	WEIGHT(kg)	AREA(m ²)
m/23	1	SHS250*250*6.0	3389	C350L0	152.4	3.3
p/7	1	PLT25*430	430	250	36.3	0.4
p/8	8	FL12*90	90	250	3.1	0.1
p/20	1	FL10*65	65	250	0.3	0.0
p/21	1	PLT6*240	240	250	2.7	0.1
TOTAL:					194.8	3.9

1 COLUMN[S] REQUIRED MK P1/2
Finish - HOT DIP GAL

- Notes:
- ALL WELDS TO BE 6CFW U.N.O
 - MARK ASSEMBLIES AS SHOWN ON DRAWINGS
 - MARK BEAM SIDE ON CLEATS WHERE INDICATED
 - MARK NORTH SIDE AS INDICATED
 - QUESTIONS - CALL ANDREW ON 0414 482 613

Rev	By	Date	Description
1	MN	08/03/2023	ISSUE FOR FABRICATION

MARKED	TACKED	CHECKED	FABRICATED
DATE:			
INITIALS:			
CUSTOMER NAME		Develle Structures 14/1 Independent way Ravenhall, VIC, 3023 Contact: Andrew Cimbaljevic Mobile: 0414 482 613	
ADDRESS		Develle Structures	
SUBURB		Drawn By: AC	
COLUMN		Checked By: MN	
		Approved By:	
Scale:	Project No:	Assembly No:	Qty:
1:25	2SMITH	P1/2	1
		Size:	Sheet No:
		A3	N/A
		Rev:	1